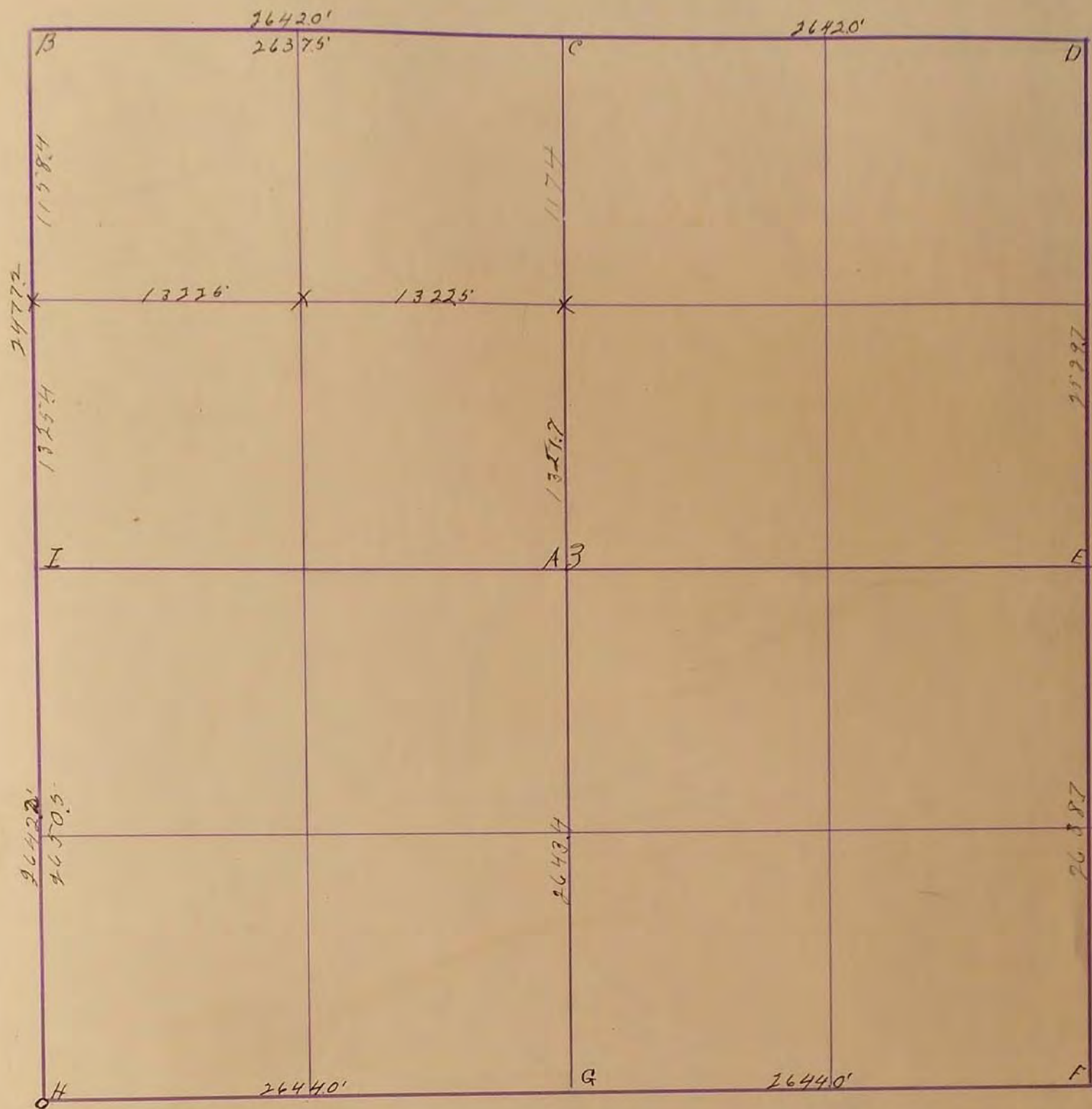


MURRAY COUNTY.

Section 3
 10798 McGill-Warner Co., Blank Book Manufacturers, St. Paul.

Township 108

Range 39



O Indicates gov. corners See Page 240
 Oct. 14, 1930.

A. Established

B. Located by measuring from Red Wood Co. Cor.
 East 134 links and Red Co. line

C. Established by measure C.A. Sec 4 B.G. Sec 3.

D. Did not find

E. Stone

F.

G. Found stone fence line south on line
 and 31.3' dist.

H. found stone fence line north in line 29-1

I Established and placed stone

X Established

"A" Stone: R.P. Tack in Blazed fence post SE. 37.9'; R.P. Tack in
 Blazed fence post NE. 43.2'

"C" Stone: R.P. Tack in cor fence post SW. 48.3'; R.P. Tack in fence post
 NW. 41.3'

"G" Stone: R.P. Tack in cor fence post south on line 31.3'; R.P. Tack
 in Blazed tel. pole NE. 46.4'

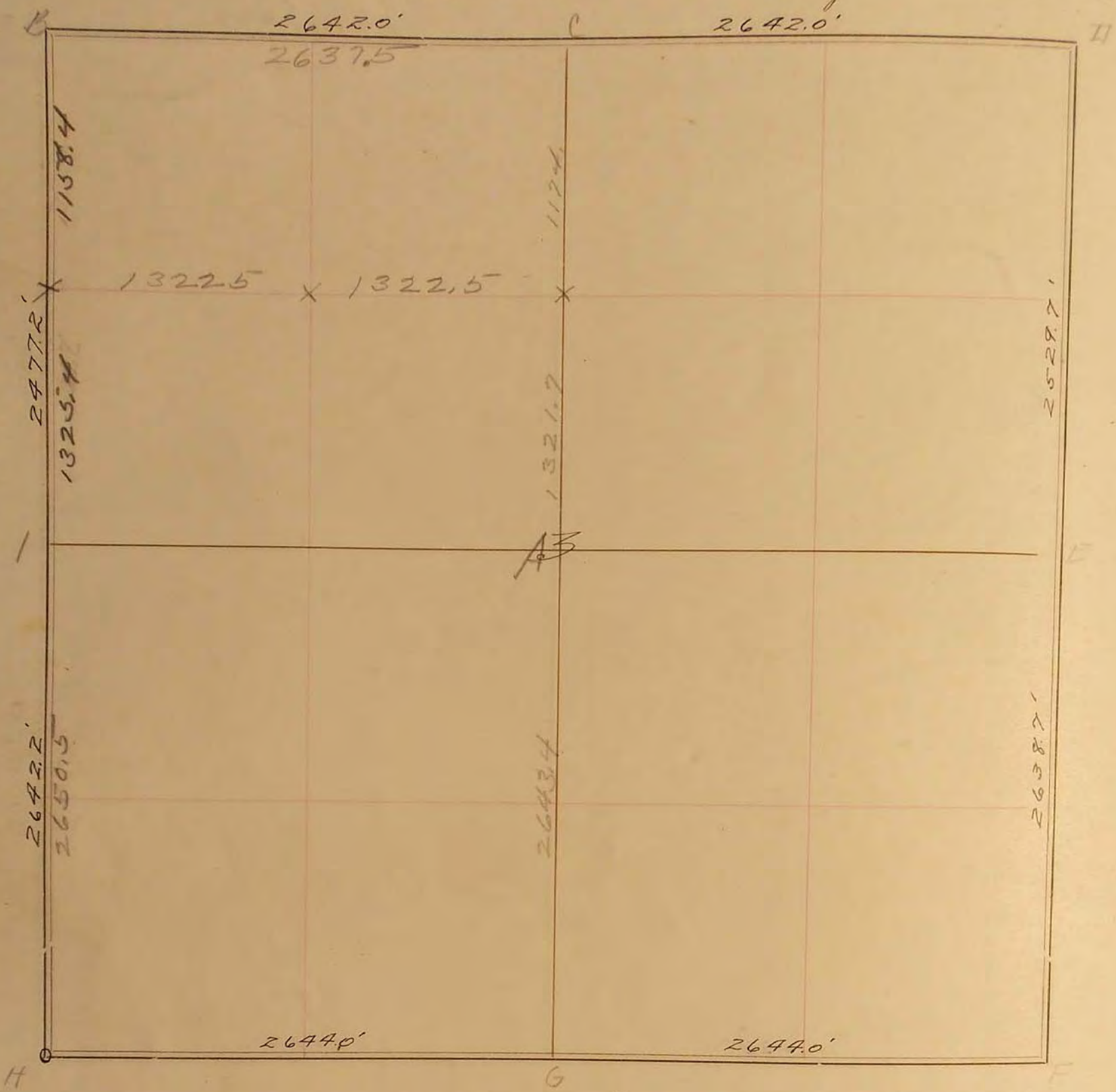
"H" Stone: R.P. Tack in Blazed fence post SE. 47.8'; R.P. Tack in
 Blazed tel pole NE. 45.9'

"H" Placed iron pin 2" below grade - 1967
 R.P. N&C, P.P., NW. 60.60'
 R.P. N&C. T.P. SE. 77.90'
 R.P. Hub. in fence line North 100'

2
3
4
5
6
7
8
9
10
11
12
13
14
15
16
17
18
19
20
21
22
23
24
25
26
27
28
29
30
31
32
33
34
35

SURVEY No. _____

Section 3 Town 108 Range 39



FIELD NOTES.

o Indicates Govt corners.
See page 240

Oct. 14, 1930

- A established
- B. Located by measuring from Red Wood county corner east 134 links and on Sec. 4
- C. Established by measure C-D-sec. 4 B C, sec. 5
- D did not find
- E stone
- F
- G found stone fence line south on line and 31.3 N. dist.
- H. " " North " 29-1'
- I. Established and placed stone
- X Established